



Public Health
Prevent. Promote. Protect.

Mahoning County District Board of Health

Influenza Summary

June 2, 2016

2015-2016 Influenza Season Surveillance Summary

Final Summary for 2015-2016 Season

The Mahoning County District Board of Health, in conjunction with Youngstown City Health District, will collect influenza surveillance data from September through May.

Summary: During MMWR Week 20, public health surveillance data sources indicate minimal intensity for influenza-like illness (ILI) in outpatient settings reported by Ohio's sentinel ILINet providers. Data from other outpatient ILI indicators (athenahealth®) are nearing baseline levels. The percentage of emergency department (ED) visits with patients exhibiting constitutional symptoms decreased and is slightly above baseline levels statewide; the percentage of fever and ILI specified ED visits decrease and is below baseline levels. There were 59 influenza-associated hospitalizations reported.

Current Ohio Activity Level – Local : Definition: Increased ILI in 1 region; ILI activity in other regions is not increased AND recent (within the past 3 weeks) lab evidence of influenza in region with increased ILI, OR 2 or more institutional outbreaks (ILI or lab confirmed) in 1 region; ILI activity in other regions is not increased AND recent (within the past 3 weeks) lab evidence of influenza in region with the outbreaks; virus activity is no greater than sporadic in other regions.

Final Summary State Surveillance Data:

- ODH lab has reported 596 influenza tests from specimens sent from various submitters. 2015-2016 influenza season results: (317) A/pdmH1N1; (22) A/H3N2; (76) Influenza B; (through 5/21/16).
- The National Respiratory and Enteric Virus Surveillance System (NREVSS) has reported 36,538 influenza tests performed at participating facilities.
- 2015-2016 influenza season positive results: (515) H1N1, (22) A/H3N2, (1901) Flu A Not Subtyped, and (823) Flu B (through 5/21/16).
- 1 pediatric influenza-associated mortality has been reported during the 2015-2016 season (through 5/21/16).
- No novel influenza A virus infections have been reported during the 2015-2016 season (through 5/21/16).
- Incidence of confirmed influenza-associated hospitalizations in 2015-2016 season = 3691 (through 5/21/16).

Local Summary: Mahoning County saw a very active but very late influenza season in 2015-2016. The peak of the season did not occur until very late around Week 10 (March 14, 2016). This is when hospitalizations, school absences, respiratory emergency department visits, and pneumonia and influenza deaths began to increase and remained high for the following 6 weeks.

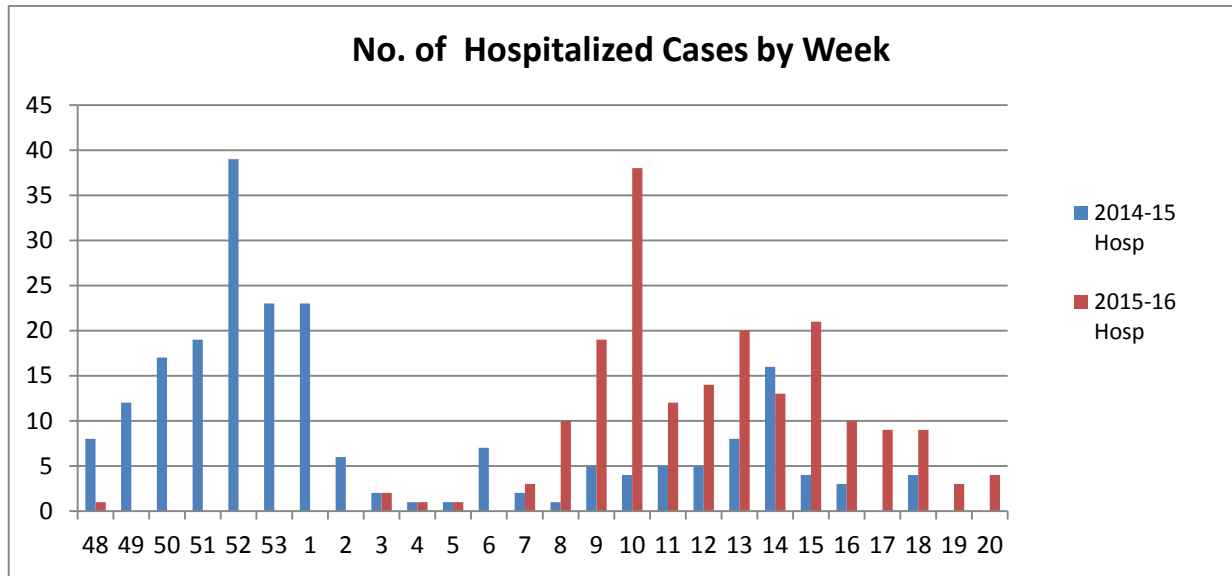
Local Surveillance:

- **Physician Offices:** (Voluntary reporting requirement)
Total: Sixty one (61) (12% of the total tested): 53 Influenza A; 8 Influenza B

Hospitalized cases: Total through 6/1/2016: (Required Reporting)

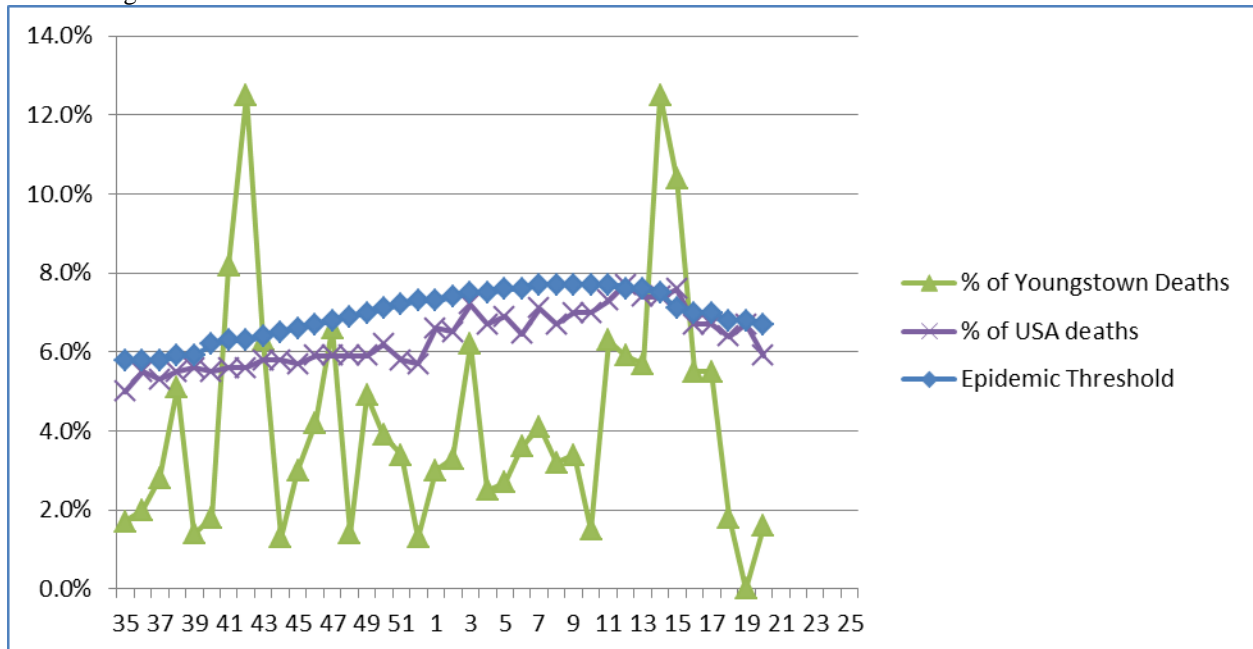
- **Total : One hundred ninety four (194): 138** Influenza A (10 pediatric),
56 Influenza B

Comparison of the 2015-16 vs 2014-15 influenza season



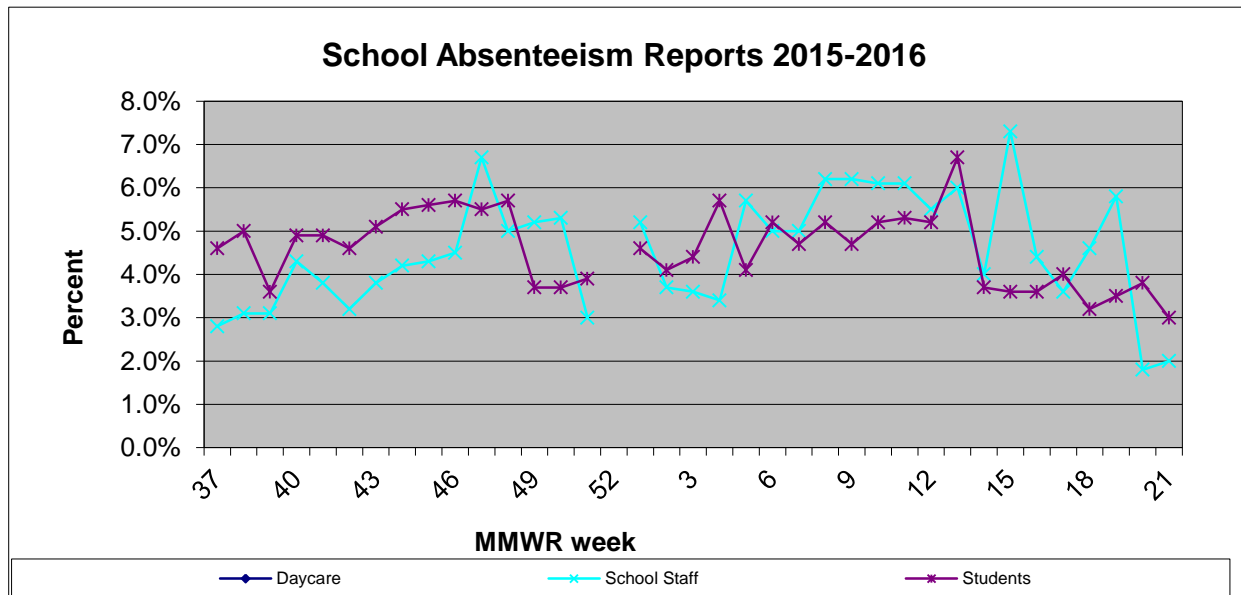
Pneumonia and Influenza (P&I) Deaths 2015-2016 Flu Season

Each week, the CDC Morbidity and Mortality Weekly report (MMWR) reports the total number of death certificates filed and the number of those for which pneumonia or influenza was listed as the underlying or as a contributing cause of death from the vital statistics offices of 122 cities



Absentee Data from sentinel Mahoning County Schools:

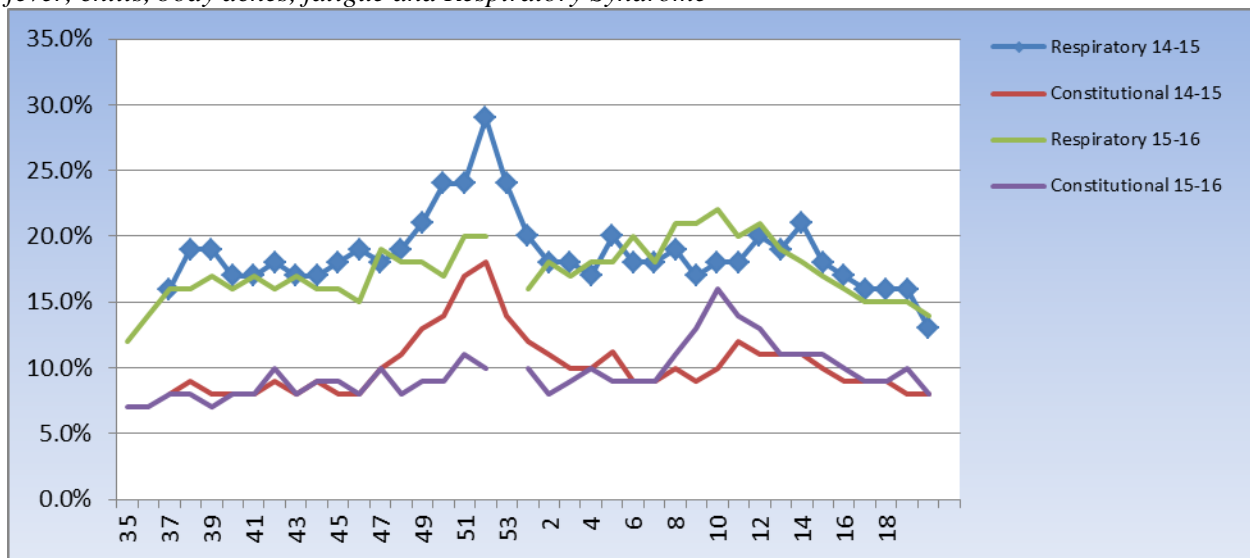
Absenteeism in schools reflects the sum of the average daily absences for the week from all the reporting schools (currently 21 out of 79 schools report) divided by the sum of the reported student population in these schools for the week. (This will help provide a more accurate number of absences during the shortened school weeks of the holidays) **Some schools closed Week 12 and others Week 13.**



All Schools, and Daycare Centers in Mahoning County were asked to participate as sentinel sites and report their daily absentee data and influenza like illness. *NOTE*: Numbers change as updated reports are received.*

Emergency Department Visits:

There are three hospital systems in Mahoning County who report electronically all ED visits into the Epicenter system. *Report: Constitutional Syndrome: Non-localized, systemic problems including fever, chills, body aches, fatigue and Respiratory Syndrome*



Any questions regarding this information please contact Susan Kovach at the Mahoning County District Board of Health at 330-270-2855 x 132.