



Public Health
Prevent. Promote. Protect.

Mahoning County District Board of Health

Influenza Summary

May 20, 2019

2018-2019 Influenza Season Surveillance Summary

Week 19(2019): May 5, 2019-May 11, 2019

The Mahoning County District Board of Health, in conjunction with Youngstown City Health District, will collect influenza surveillance data from September through May.

Summary: During MMWR Week 19, public health surveillance data sources indicate Minimal intensity for influenza-like illness (ILI) in outpatient settings reported by Ohio's sentinel providers. The percentage of emergency department (ED) visits with patients exhibiting constitutional symptoms and fever and ILI specified ED visits decreased and are now below baseline levels. Reported cases of influenza associated hospitalizations are below the seasonal threshold*. There were 20 influenza-associated hospitalizations reported during MMWR Week 19

Current Ohio Activity Level – Local Activity: *Definition: Increased ILI in 1 region; ILI activity in other regions is not increased AND recent (within the past 3 weeks) lab evidence of influenza in region with increased ILI, OR 2 or more institutional outbreaks (ILI or lab confirmed) in 1 region; ILI activity in other regions is not increased AND recent (within the past 3 weeks) lab evidence of influenza in region with the outbreaks; virus activity is no greater than sporadic in other regions.*

State Surveillance Data:

- ODH lab has reported 1325 positive influenza tests from specimens sent from various submitters.
- 2018-2019 influenza season positive results: (618) A/pdmH1N1; (695) A/H3N2; (12) Influenza B; (through 05/11/2019).
- The National Respiratory and Enteric Virus Surveillance System (NREVSS) has reported 78,965 influenza tests performed at participating facilities.
- 2018-2019 influenza season positive results: (447) A/pdmH1N1, (568) A/H3N2, (12,737) Flu A Not Subtyped, and (308) Flu B (through 05/11/2019).
- 4 pediatric influenza-associated mortalities have been reported during the 2018-2019 season (through 05/11/2019).
- No novel influenza A virus infections have been reported during the 2018-2019 season (through 05/11/2019).
- Incidence of confirmed influenza-associated hospitalizations in 2018-2019 season = 9828 (through 05/11/2019).

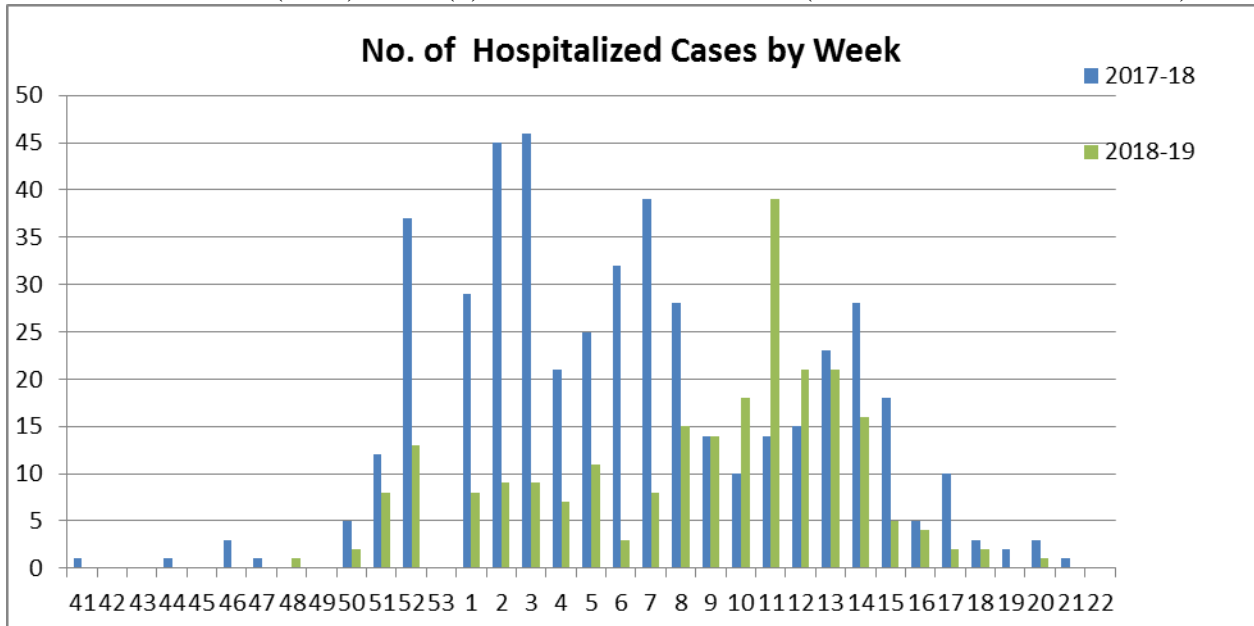
Local Surveillance: (Week 19): Ohio influenza level has been reduced to regional flu activity this week. Influenza like illness and respiratory illness seen in emergency room visits continue to decrease. There has been only one additional hospitalized case reported for the last 2 weeks.

○ Physician Offices:

- **Total:** Three hundred seventy six (376) positive tests (38%) reported for Influenza since Week 41.
 - 359 Influenza A and 17 Influenza B
- **Week 19:** One (1) positive Influenza cases (17% of the tests were positive) 100% Influenza B

Hospitalized cases:

- **Total: Two hundred and thirty seven (237)** hospitalized cases have been reported.
 - 233 Influenza A and 4 Influenza B: 21 pediatric cases
- Week 19 (2019) : Zero (0) new cases (0 Influenza A: 0 Influenza B)
- Week 20 (2019) : One (1) new cases as of 5/17/19 (1 Influenza A: 0 Influenza B)

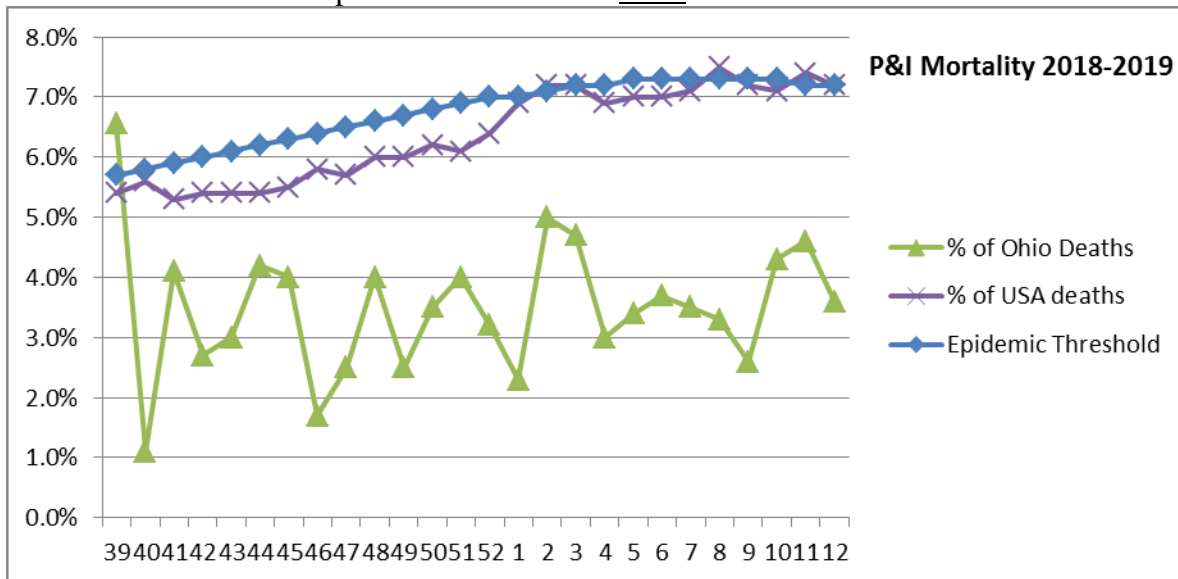


Pneumonia and Influenza (P&I) Deaths 2018-2019 Flu Season

Each week, the CDC Morbidity and Mortality Weekly report (MMWR) reports the total number of death certificates filed and the number of those for which pneumonia or influenza was listed as the underlying or as a contributing cause of death from the vital statistics offices of 122 cities. **CDC is no longer reporting local city data, only by state so we will be reporting Ohio P & I deaths instead of Youngstown data**

MMWR Week 18:

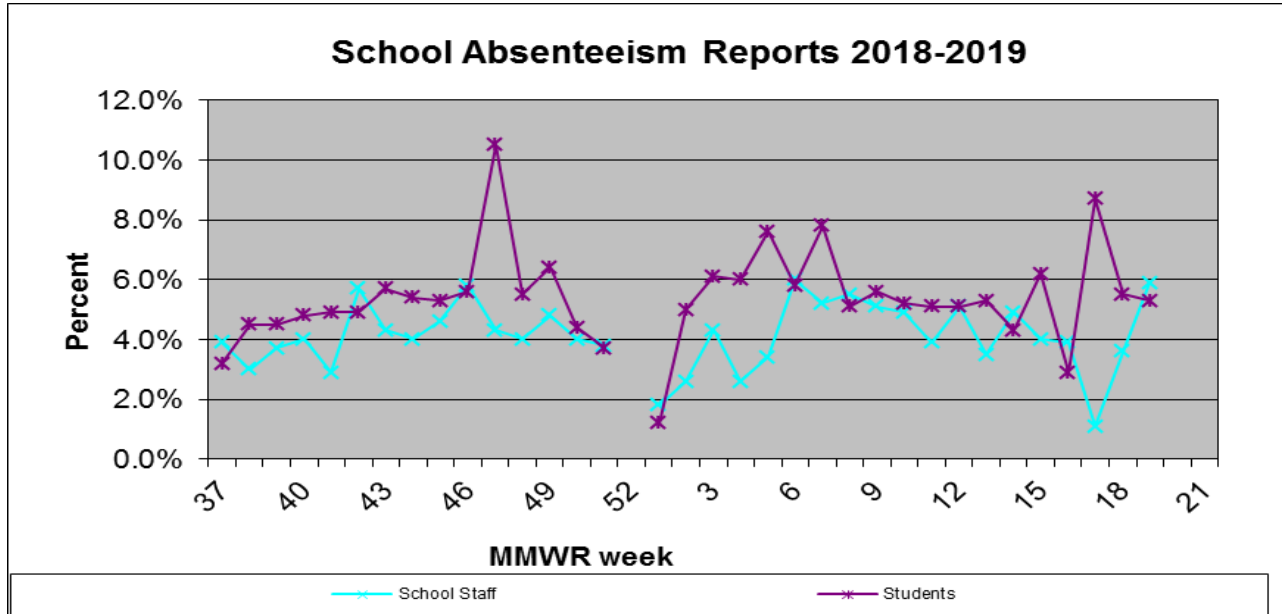
- Ohio mortality due to P &I was 3.1%
- United States mortality due to P & I was 5.6%
- National Epidemic Threshold of 6.7%



Absentee Data from sentinel Mahoning County Schools: (Week 19)

Absenteeism in schools reflects the sum of the average daily absences for the week from all the reporting schools (currently 21 out of 79 schools report) divided by the sum of the reported student population in these schools for the week. (This will help provide a more accurate number of absences during the shortened school weeks of the holidays) * **Schools closed Week 52.- Schools closed at different times/intervals Week 16 and Week 19**

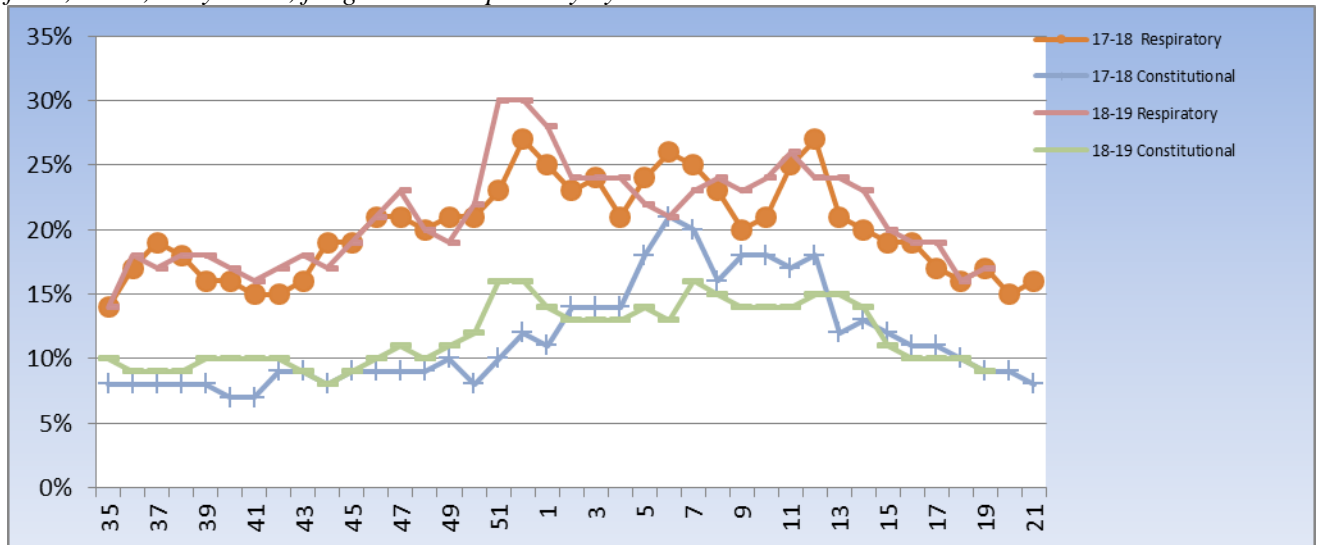
- **School absences:** (Total absences for week vs. population of school: could mean one child absent on multiple days) **Week 19**
 - **Students: 5.3%**
 - **Staff: 5.9%**



All Schools, and Daycare Centers in Mahoning County were asked to participate as sentinel sites and report their daily absentee data and influenza like illness. *NOTE*: Numbers change as updated reports are received.*

Emergency Department Visits:

There are two hospital systems in Mahoning County who report electronically all ED visits into the Epicenter system. *Report: Constitutional Syndrome: Non-localized, systemic problems including fever, chills, body aches, fatigue and Respiratory Syndrome*



Any questions regarding this information please contact Susan Kovach at the Mahoning County District Board of Health at 330-270-2855 x 132