



Public Health
Prevent. Promote. Protect.

Mahoning County District Board of Health

Influenza Summary

May 13, 2019

2018-2019 Influenza Season Surveillance Summary

Week 18(2019): April 28, 2019-May 4, 2019

The Mahoning County District Board of Health, in conjunction with Youngstown City Health District, will collect influenza surveillance data from September through May.

Summary: During MMWR Week 18, public health surveillance data sources indicate Minimal intensity for influenza-like illness (ILI) in outpatient settings reported by Ohio's sentinel providers. The percentage of emergency department (ED) visits with patients exhibiting constitutional symptoms and fever and ILI specified ED visits decreased and are now below baseline levels. Reported cases of influenza associated hospitalizations remain above the seasonal threshold*. There were 49 influenza-associated hospitalizations reported during MMWR Week 18.

Current Ohio Activity Level – Regional Activity: *Definition: Increased ILI in > 2 but less than half of the regions AND recent (within the past 3 weeks) lab confirmed influenza in the affected regions, OR institutional outbreaks (ILI or lab confirmed) in > 2 but less than half of the regions AND recent (within the past 3 weeks) lab confirmed influenza in the affected regions.*

State Surveillance Data:

- ODH lab has reported 1310 positive influenza tests from specimens sent from various submitters.
- 2018-2019 influenza season positive results: (665) A/pdmH1N1; (633) A/H3N2; (12) Influenza B; (through 05/04/2019).
- The National Respiratory and Enteric Virus Surveillance System (NREVSS) has reported 77,890 influenza tests performed at participating facilities.
- 2018-2019 influenza season positive results: (446) A/pdmH1N1, (567) A/H3N2, (12,731) Flu A Not Subtyped, and (306) Flu B (through 05/04/2019).
- 4 pediatric influenza-associated mortalities have been reported during the 2018-2019 season (through 05/04/2019).
- No novel influenza A virus infections have been reported during the 2018-2019 season (through 05/04/2019).
- Incidence of confirmed influenza-associated hospitalizations in 2018-2019 season = 9808 (through 05/04/2019).

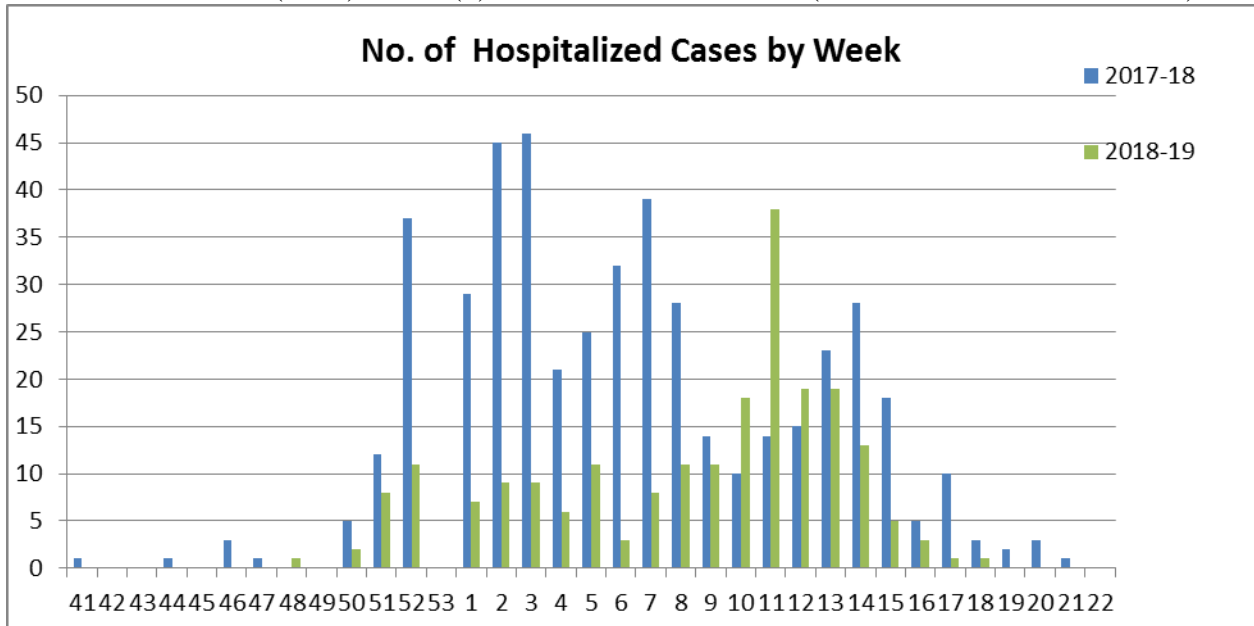
Local Surveillance: (Week 18): Ohio influenza level has been reduced to regional flu activity this week. Influenza like illness and respiratory illness seen in emergency room visits continue to decrease. There have been no additional hospitalized cases reported for 2 weeks.

○ Physician Offices:

- **Total:** Three hundred seventy five (375) positive tests (38%) reported for Influenza since Week 41.
 - 359 Influenza A and 16 Influenza B
- **Week 18:** Two (2) positive Influenza cases (29% of the tests were positive) 100% Influenza A

Hospitalized cases:

- **Total: Two hundred and fourteen (214)** hospitalized cases have been reported.
 - 210 Influenza A and 4 Influenza B: 21 pediatric cases
- Week 18 (2019) : One (1) new cases (1 Influenza A: 0 Influenza B)
- Week 19 (2019) : Zero (0) new cases as of 5/10/19 (0 Influenza A: 0 Influenza B)

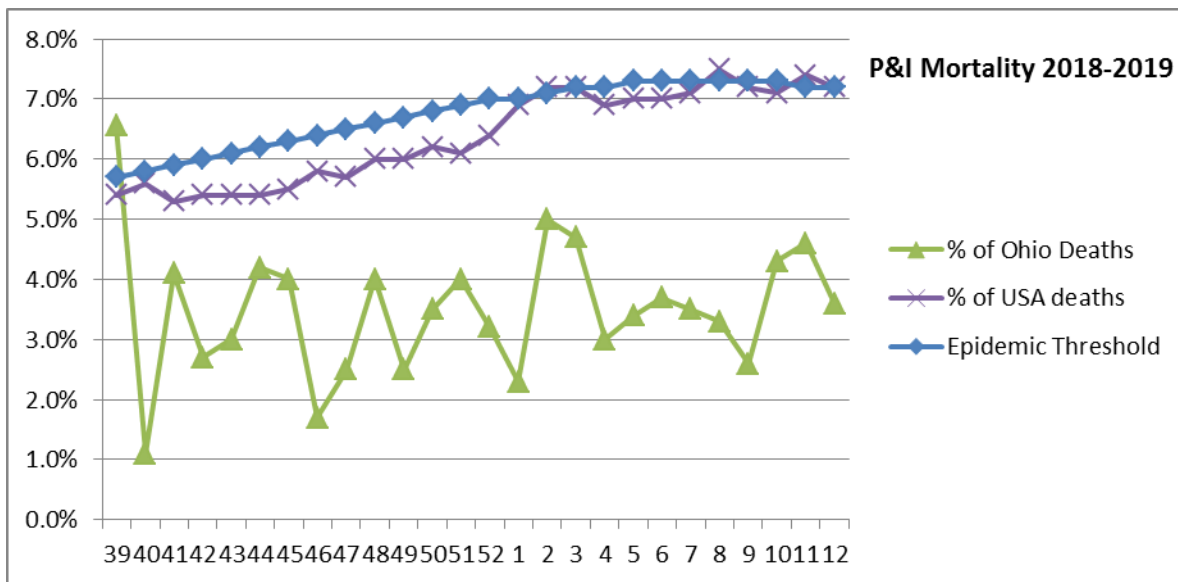


Pneumonia and Influenza (P&I) Deaths 2018-2019 Flu Season

Each week, the CDC Morbidity and Mortality Weekly report (MMWR) reports the total number of death certificates filed and the number of those for which pneumonia or influenza was listed as the underlying or as a contributing cause of death from the vital statistics offices of 122 cities. **CDC is no longer reporting local city data, only by state so we will be reporting Ohio P & I deaths instead of Youngstown data**

MMWR Week 17:

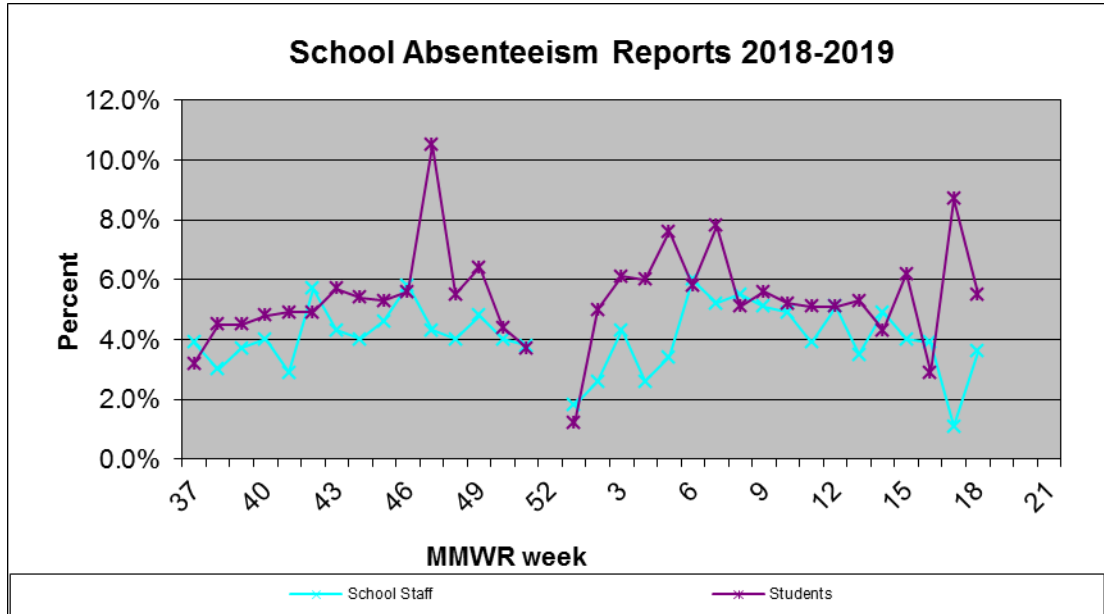
- Ohio mortality due to P &I was 2.9%
- United States mortality due to P & I was 6.0%
- National Epidemic Threshold of 6.8%



Absentee Data from sentinel Mahoning County Schools: (Week 18)

Absenteeism in schools reflects the sum of the average daily absences for the week from all the reporting schools (currently 21 out of 79 schools report) divided by the sum of the reported student population in these schools for the week. (This will help provide a more accurate number of absences during the shortened school weeks of the holidays) * **Schools closed Week 52.- Schools closed at different times/intervals Week 16 and Week 18**

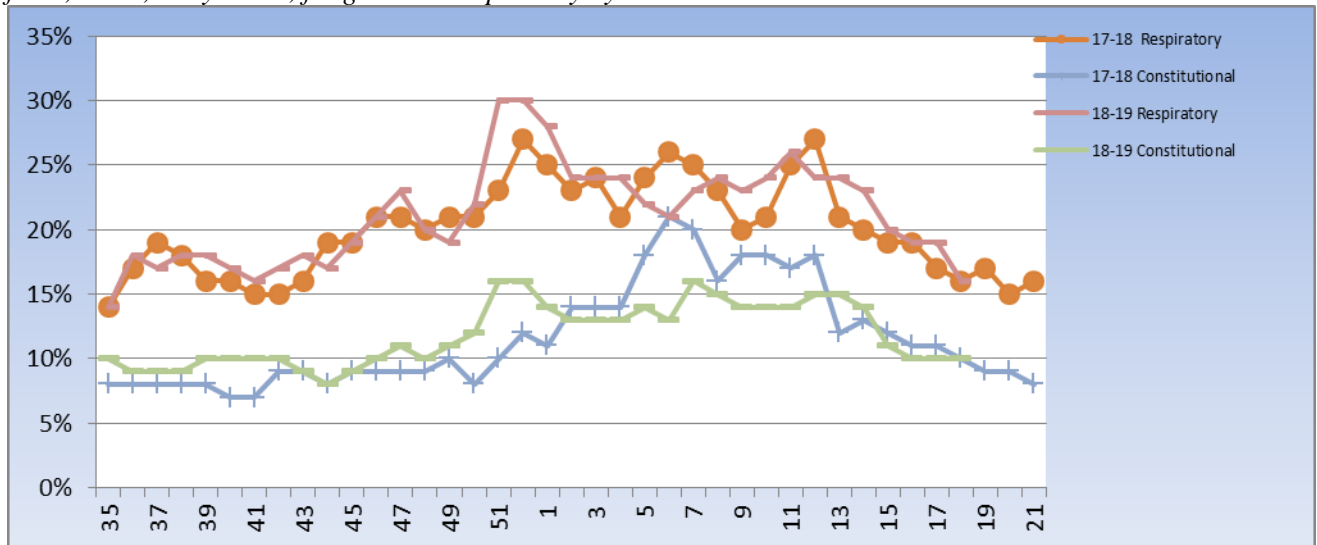
- **School absences:** (Total absences for week vs. population of school: could mean one child absent on multiple days) **Week 18**
 - **Students: 5.5%**
 - **Staff: 3.6%**



All Schools, and Daycare Centers in Mahoning County were asked to participate as sentinel sites and report their daily absentee data and influenza like illness. *NOTE*: Numbers change as updated reports are received.*

Emergency Department Visits:

There are two hospital systems in Mahoning County who report electronically all ED visits into the Epicenter system. *Report: Constitutional Syndrome: Non-localized, systemic problems including fever, chills, body aches, fatigue and Respiratory Syndrome*



Any questions regarding this information please contact Susan Kovach at the Mahoning County District Board of Health at 330-270-2855 x 132