



## 2019-2020 Influenza Season Surveillance Summary

**Week 8 (2020): February 16, 2020-February 22, 2020**

Mahoning County Public Health, in conjunction with Youngstown City Health District, will collect influenza surveillance data from September through May.

**Summary:** During MMWR Week 8, public health surveillance data sources indicate Moderate intensity for influenza-like illness (ILI) in outpatient settings reported by Ohio's sentinel providers. The percentage of emergency department visits with patients exhibiting constitutional symptoms decreased but are still above baseline levels statewide; fever and ILI specified ED visits decreased and are also still above baseline levels. Reported cases of influenza-associated hospitalizations are above the seasonal threshold\*. There were 981 influenza-associated hospitalizations reported during MMWR Week 8.

**Current Ohio Activity Level - *Widespread*:** Definition: Increased ILI in at least half of the regions AND recent (within the past 3 weeks) lab confirmed influenza in the state.

### State Surveillance Data:

- ODH lab has reported 709 positive influenza tests from specimens sent from sentinel ILINet providers and hospital clinical labs. 2019-2020 influenza season results: (377) A/H1N1pdm09; (17) A/H3N2; (315) Influenza B; (through 02/22/2020).
- The National Respiratory and Enteric Virus Surveillance System (NREVSS) has reported 63,902 influenza specimens tested by RT-PCR at participating facilities. 2019-2020 influenza season positive results: (418) A/pdmH1N1; (3) A/H3N2; (6,773) Flu A Not Subtyped; and (7,575) Flu B; (through 02/22/2020)
- 2 influenza-associated pediatric mortalities have been reported during the 2019-2020 season (through 02/22/2020).
- No novel influenza A virus infections have been reported during the 2019-2020 season (through 02/22/2020).
- Incidence of confirmed influenza-associated hospitalizations in 2019-2020 season = 7,592 (through 02/22/2020)

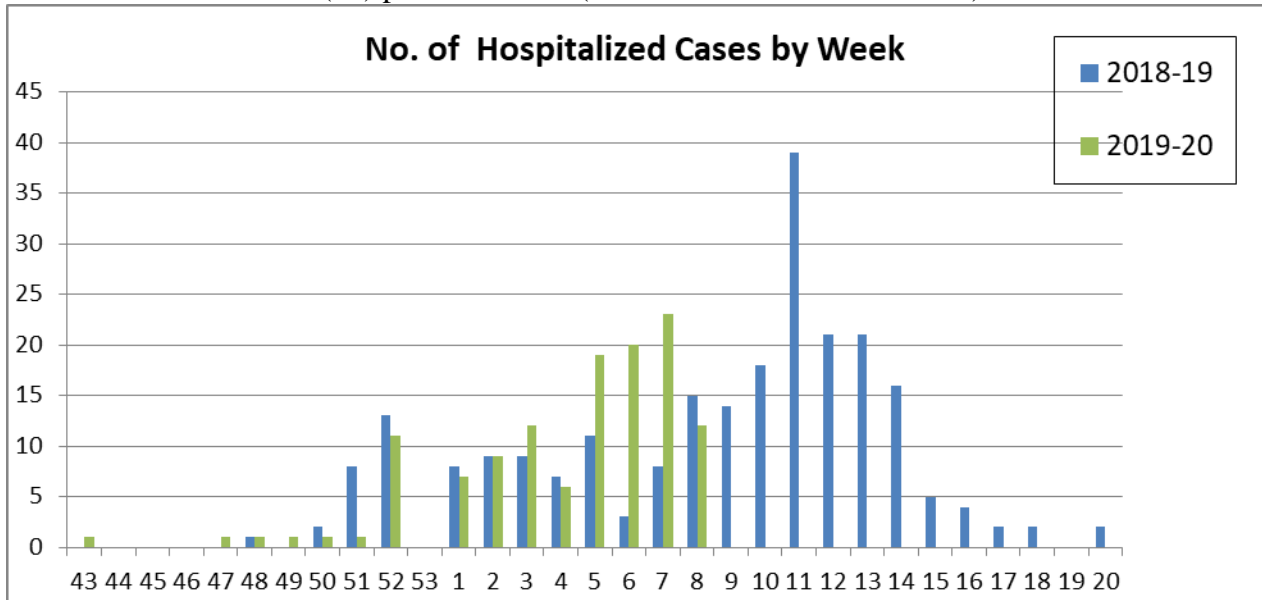
**Local Surveillance: (Week 8)** There continues to be an increase in influenza like illness and positive influenza cases being reported. Respiratory illness continues to increase among the emergency room visits.

- **Physician Offices\*:** Influenza testing is occurring in physician offices:
  - **Week 8:** Ninety one (91) positive Influenza tests were reported (28% of tests performed) (51 Influenza A/ 40 Influenza B)
  - **Total:** Seven hundred and twenty nine (729) positive: (238 Influenza A/ 456 Influenza B/ 35 Unknown) 30% cases tested were positive.

\*Non hospitalized tests are not required to be reported. These tests are reported by 4 sentinel sites in the county.

**Hospitalized cases:**

- **Week 8:** Twenty seven (27) cases: 21 Influenza A/ 6 Influenza B
- **Week 9:** Eight (8) cases (as of 2/27/2020): 8 Influenza A/ Influenza B
- **Total:** One hundred sixty four (164) influenza cases (112 Influenza A/ 52 Influenza B)  
Nineteen (19) pediatric cases (9 Influenza A/ 10 Influenza B)

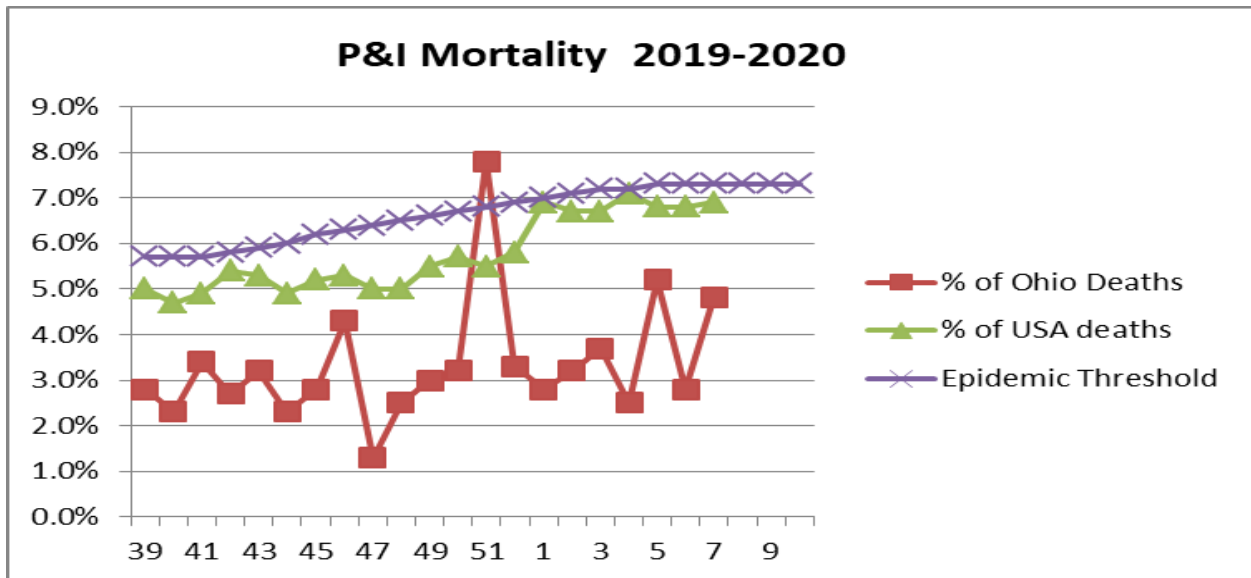


**Pneumonia and Influenza (P&I) Deaths 2019-2020 Flu Season**

Each week, the CDC Morbidity and Mortality Weekly report (MMWR) reports the total number of death certificates filed and the number of those for which pneumonia or influenza was listed as the underlying or as a contributing cause of death from the vital statistics offices of 122 cities. **CDC is no longer reporting local city data, only by state so we will be reporting Ohio P & I deaths instead of Youngstown data**

**MMWR Week 7:**

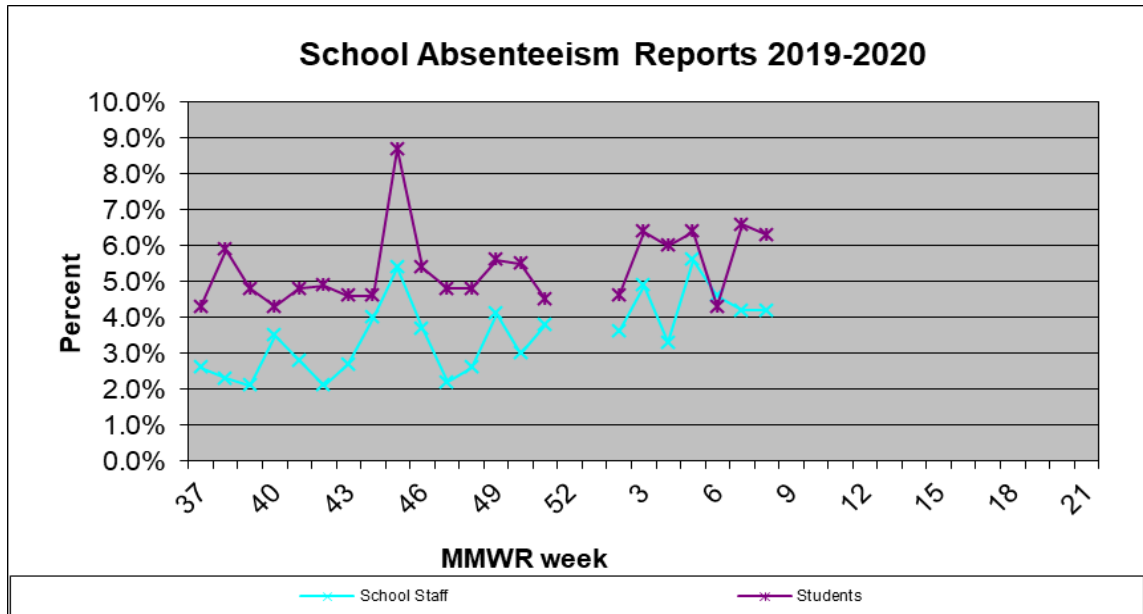
- Ohio mortality due to P & I was 4.8%
- United States mortality due to P & I was 6.9%
- National Epidemic Threshold of 7.3%.



### Absentee Data from sentinel Mahoning County Schools: (Week 8)

Absenteeism in schools reflects the sum of the average daily absences for the week from all the reporting schools (currently 21 out of 79 schools report) divided by the sum of the reported student population in these schools for the week. (This will help provide a more accurate number of absences during the shortened school weeks of the holidays)

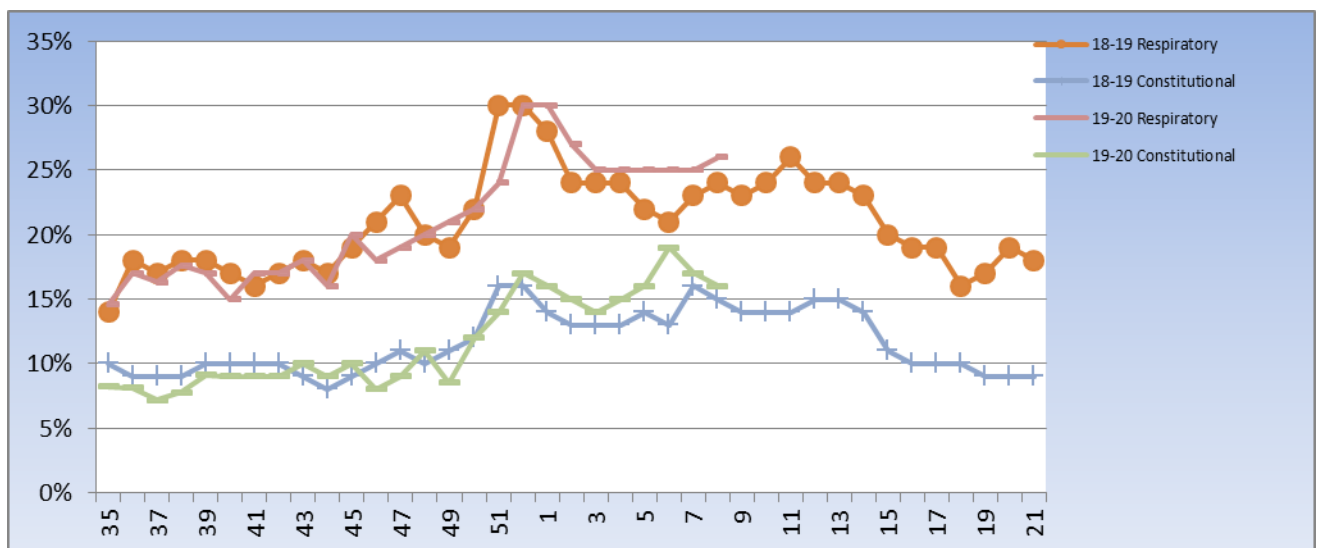
- **School absences:** (Total absences for week vs. population of school: could mean one child absent on multiple days) Week 8: (**Schools were closed Week 52 and Week 1**)
  - **Students: 6.3%**
  - **Staff: 4.2%**



All Schools, and Daycare Centers in Mahoning County were asked to participate as sentinel sites and report their daily absentee data and influenza like illness. *NOTE\*: Numbers change as updated reports are received.*

### Emergency Department Visits:

There are three hospital systems in Mahoning County who report electronically all ED visits into the Epicenter system. *Report: Constitutional Syndrome: Non-localized, systemic problems including fever, chills, body aches, fatigue and Respiratory Syndrome*



Any questions regarding this information please contact Susan Kovach at the Mahoning County District Board of Health at 330-270-2855 x 132.