



Public Health
Prevent. Promote. Protect.

District Board of Health *FACT SHEET*

Low Interest Loans Available to Homeowners and Businesses for Sewer Connections and Sewage System Improvements

State and local environmental regulatory agencies and two local banks have joined forces to offer a program through which homeowners and businesses can receive below-market interest rates from local banks to repair, or replace their home or commercial sewage systems (including Ohio EPA approved off-lot discharging systems) or connect their homes or businesses to public sewers.

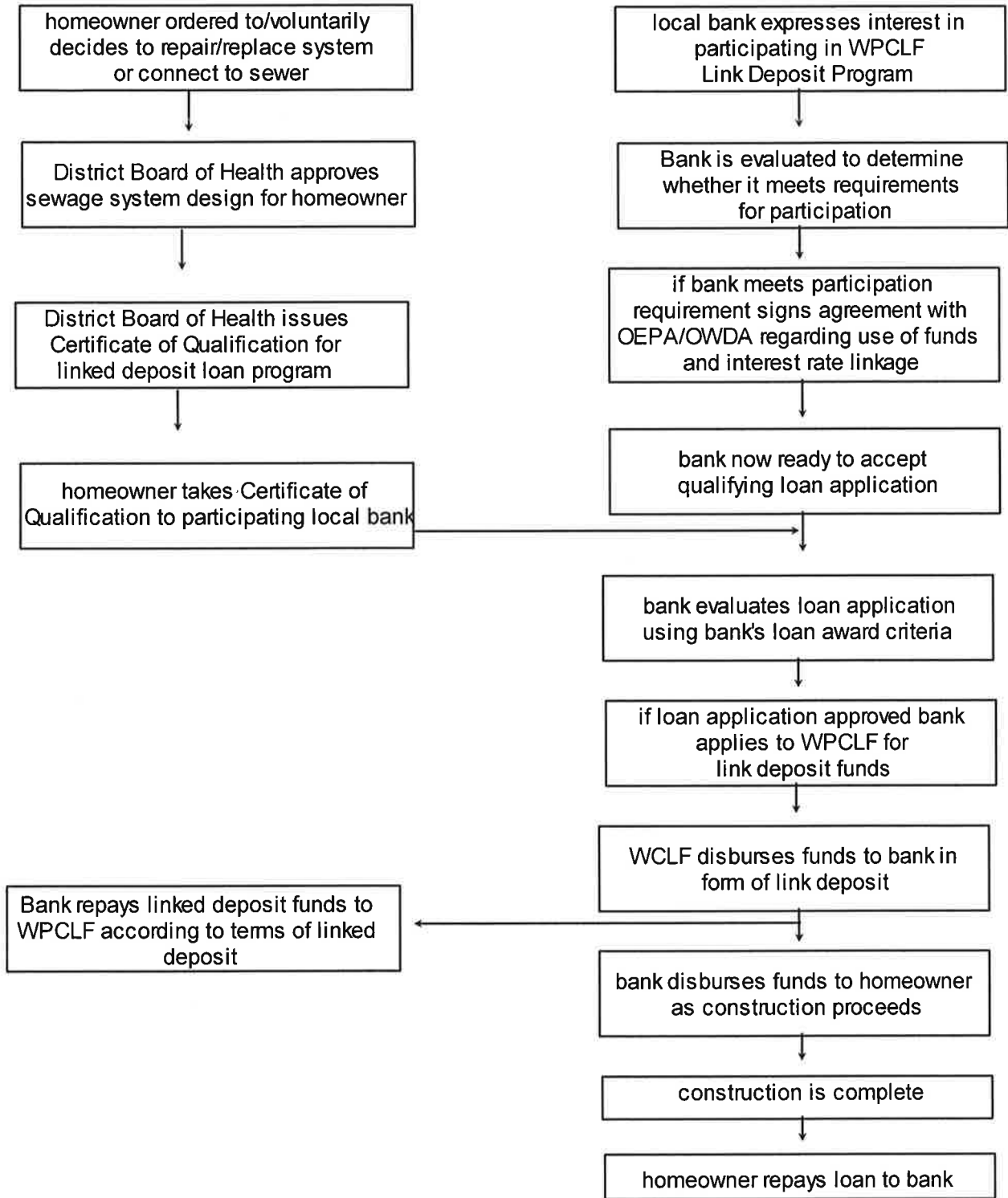
Malfunctioning home sewage systems discharge millions of gallons of pollutants into Mahoning County's surface and ground water every year. This loan program - the first of its kind in the U.S. - is a key element in a Home Sewage Pollution Prevention Plan adopted by the District Board of Health and Ohio Environmental Protection Agency (EPA). The plan includes financial incentives, a homeowner education program, more frequent inspections of home sewage systems, and stricter enforcement of existing regulations to eliminate public health nuisances created by malfunctioning systems.

Through the Water Pollution Control Loan Fund linked deposit loan program, the Ohio EPA makes deposits in local banks which agree to offer discounted loans to homeowners and businesses with District Board of Health or Ohio EPA approval for sewer connections or sewage system improvements. Homeowners or businesses may use these loans to make improvements voluntarily or under order from the District Board of Health or Ohio EPA. The banks will conduct their normal credit reviews of applicants for linked deposit loans. If a bank approves an application, it will set the terms of the loan as it would any other loan, minus up to a five percentage point discount that the bank itself receives from the Ohio EPA for its linked deposit with the bank. The diagram on the other side of this fact sheet shows how the loan process works.

The linked deposit method of financing pollution prevention offers several advantages. It allows credit decisions to be made by experienced loan officers. Further, it is more efficient for such loans to be managed by private lenders who are themselves more accessible to loan seekers and better able than a government agency to market this loan product to their customers. One local lending institution - **KeyBank** - participates in the program.

For more information about low-interest loans for home and commercial sewage system improvements, call a loan officer at KeyBank or the Environmental Health Division of the District Board of Health at 330-270-2855, menu selection #2 or 1-800-873-MCHD.

LINKED DEPOSIT LOAN PROGRAM FLOWCHART



CERTIFICATE OF QUALIFICATION

The Mahoning County District Board of Health certifies that;

Name: _____

Mailing Address _____

Property Address: _____

The above property is eligible to apply for a loan through the Water Pollution Control Loan Fund (WPCLF) Linked Deposit Program for any or all of the components identified in this letter.

The District Board of Health, Mahoning County has issued a permit and this individual has agreed to the conditions of that permit. In addition, a Long Term Contract between this individual and the District Board of Health has been executed which stipulates the terms and conditions of compliance with the permit. The permit for this individual is on file at the District Board of Health office.

Issuance of this Certificate of Qualification shall not be deemed to be, include in, or imply, an evaluation of credit worthiness of this individual, or to constitute a recommendation that a loan be made.

This Certificate of Qualification shall in no way be deemed to be a guaranty of any payment due from any eligible borrower to any participating bank.

Components eligible and scheduled for implementation of WPCLF Linked Deposit loan(s) are:

<u>Eligible Components</u>	<u>Estimated Amount(s)</u>	<u>Schedule</u>
1.		
2.		
3.		
4.		

The District Board of Health staff will inspect and insure proper installation of these components and others related to the implementation of this project.

Patricia M. Sweeney, JD, MPH, RN
Health Commissioner

DATE: