



**Public Health**  
Prevent. Promote. Protect.

# Mahoning County District Board of Health

Influenza Summary

April 23, 2018

## 2017-2018 Influenza Season Surveillance Summary

### Week 15/2018: April 8, 2018-April 14, 2018

The Mahoning County District Board of Health, in conjunction with Youngstown City Health District, will collect influenza surveillance data from September through May.

**Summary:** During MMWR Week 15, public health surveillance data sources indicate decreased influenza-like illness (ILI) activity in outpatient settings reported by Ohio's sentinel ILINet providers. Outpatient medical claims related to influenza-like illness also decreased during MMWR Week 15. The percentage of emergency department visits with patients exhibiting constitutional symptoms and ILI specified ED visits decreased as well. Reported cases of influenza-associated hospitalizations are above the seasonal threshold\* with 365 influenza-associated hospitalizations reported during MMWR Week 15.

**Current Ohio Activity Level: *Regional:*** *Definition: Increased ILI in > 2 but less than half of the regions AND recent (within the past 3 weeks) lab confirmed influenza in the affected regions, OR institutional outbreaks (ILI or lab confirmed) in > 2 but less than half of the regions AND recent (within the past 3 weeks) lab confirmed influenza in the affected regions.*

### State Surveillance Data:

- ODH lab has reported 1188 influenza tests from specimens sent from various submitters. 2017-2018 influenza season positive results: (683) A/H3N2; (104) A/pdmH1N1; (195) Influenza B; (through 04/14/2018).
- The National Respiratory and Enteric Virus Surveillance System (NREVSS) has reported 74,291 influenza tests performed at participating facilities. 2017-2018 influenza season positive results: (195) H1N1, (636) A/H3N2, (11,199) Flu A Not Subtyped, and (4107) Flu B (through 04/14/2018).
- 4 pediatric influenza-associated mortalities have been reported during the 2017-2018 season (through 04/14/2018).
- No novel influenza A virus infections have been reported during the 2017-2018 season (through 04/14/2018).
- Incidence of confirmed influenza-associated hospitalizations in 2017-2018 season = 16,565\* (through 04/14/2018).

**Local Surveillance: (Week 15/2018)** Constitutional and Respiratory illness have begun to decrease in emergency room visits this week. The activity level in Ohio has been reduced to regional from widespread. The influenza associated hospitalizations continue, mainly with Influenza B in Week 15 and continuing into Week 16.

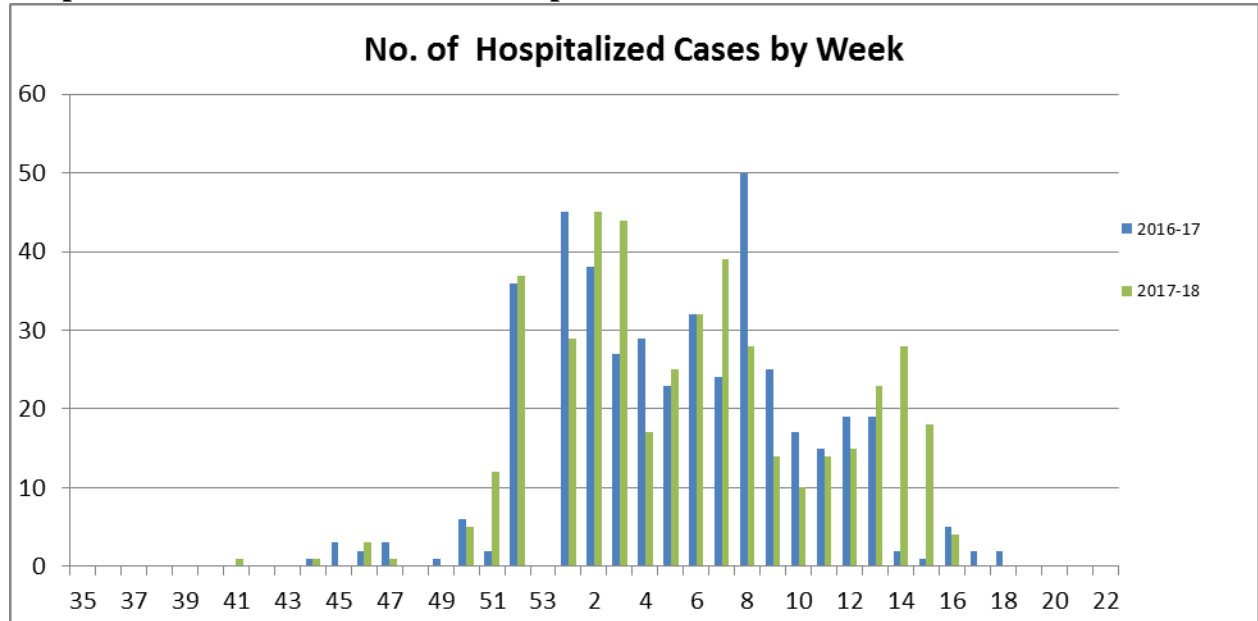
- **Physician Offices:** Physicians' offices testing for influenza\*
  - Week 15: **7%** of the rapid tests completed were positive (2 physicians reported) and **100%** of those tests were positive for Influenza B

\*Physician office reporting is voluntary

**Hospitalized cases: Four hundred and forty five (445)** hospitalized cases have been reported through 4/20/2018. Three hundred and nineteen (319) are Influenza A and one hundred and twenty six (126) are Influenza B and one (1) case positive for Influenza A and B. Thirty four (34) are children under the age of 18.

- Week 15: 18 hospitalized cases
- Week 16: 4 hospitalized cases as of 4/20/2018

**Hospitalized cases for 17-18 season compared to 16-17 season.**

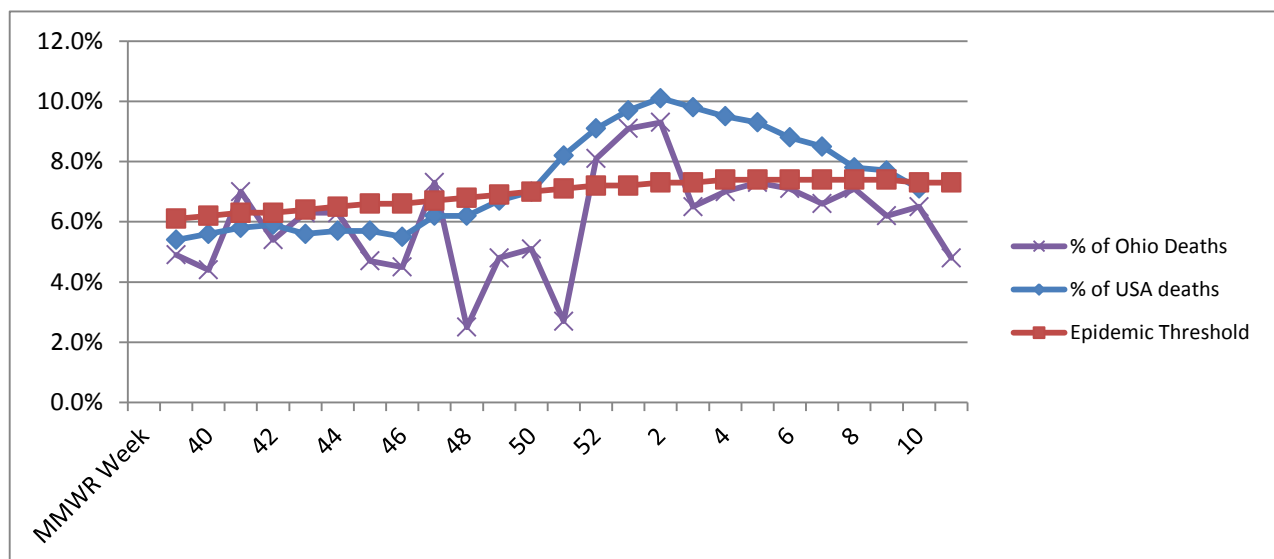


**Pneumonia and Influenza (P&I) Deaths 2016-2017 Flu Season**

Each week, the CDC Morbidity and Mortality Weekly report (MMWR) reports the total number of death certificates filed and the number of those for which pneumonia or influenza was listed as the underlying or as a contributing cause of death from the vital statistics offices of 122 cities. **CDC is no longer reporting local city data, only by state so we will be reporting Ohio P & I deaths instead of Youngstown data**

**MMWR Week 13/2018**

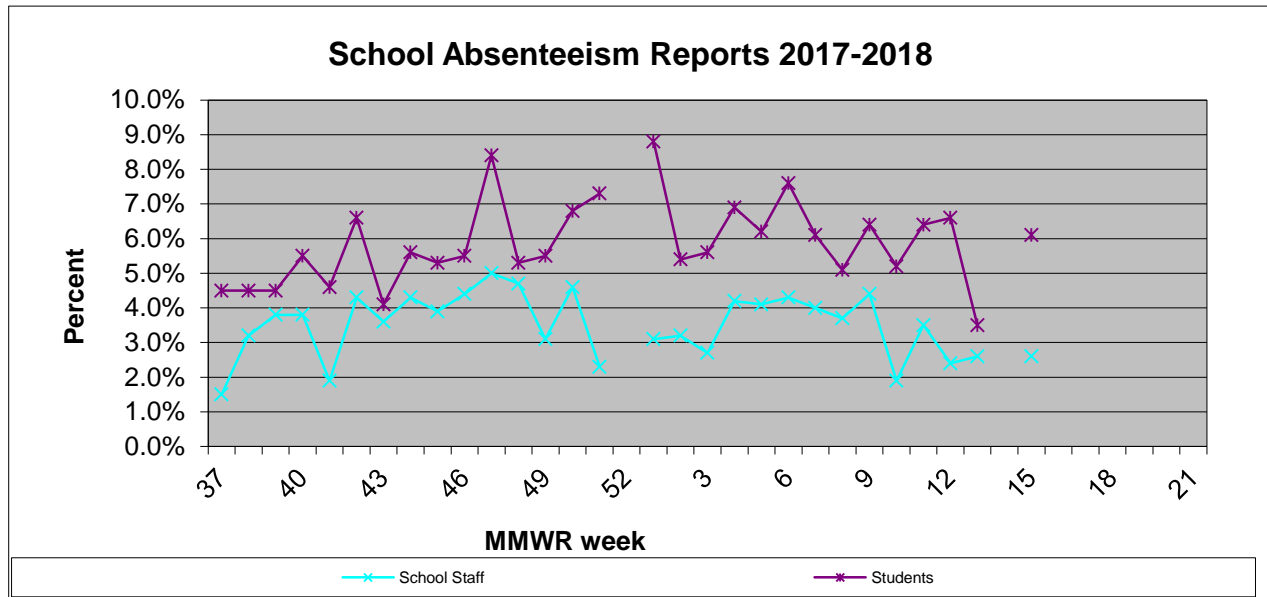
- Ohio mortality due to P & I was 5.6%
- United States mortality due to P & I was 7.1%
- National Epidemic Threshold of 7.2%.



**Absentee Data from sentinel Mahoning County Schools, Daycares, and Long Term Care Centers: (Week 15/2018): Most of schools were closed Week 14**

Absenteeism in schools reflects the sum of the average daily absences for the week from all the reporting schools (currently 21 out of 79 schools report) divided by the sum of the reported student population in these schools for the week. (This will help provide a more accurate number of absences during the shortened school weeks of the holidays)

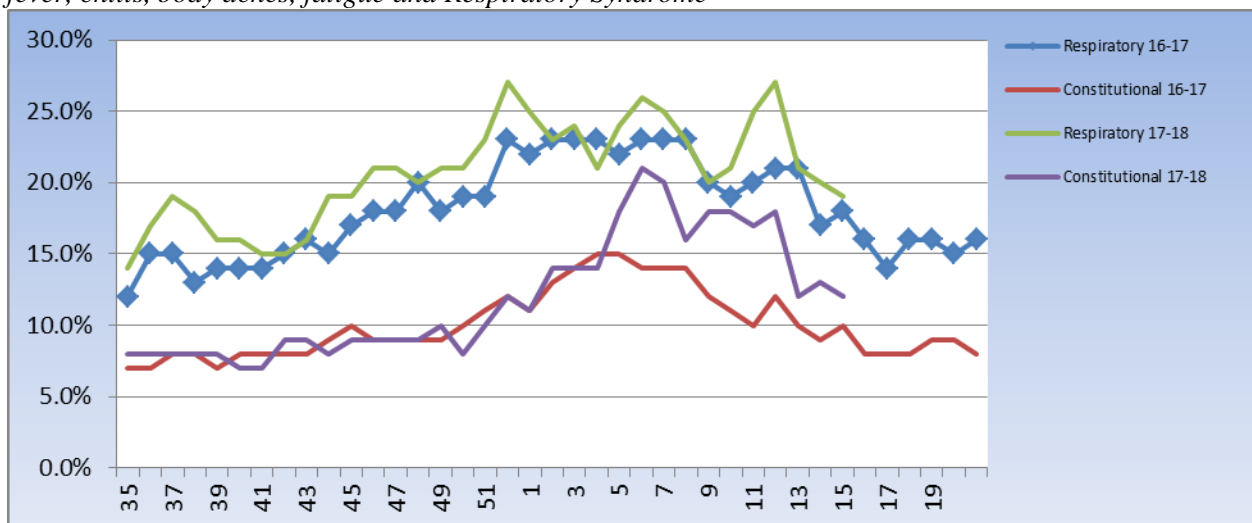
- **School absences:** (Total absences for week vs. population of school: could mean one child absent on multiple days) Week 15/2018
  - **Students: 6.1%**
  - **Staff: 2.6%**



All Schools, and Daycare Centers in Mahoning County were asked to participate as sentinel sites and report their daily absentee data and influenza like illness. *NOTE\*: Numbers change as updated reports are received.*

**Emergency Department Visits:**

There are three hospital systems in Mahoning County who report electronically all ED visits into the Epicenter system. *Report: Constitutional Syndrome: Non-localized, systemic problems including fever, chills, body aches, fatigue and Respiratory Syndrome*



Any questions regarding this information please contact Susan Kovach at the Mahoning County District Board of Health at 330-270-2855 x 132.